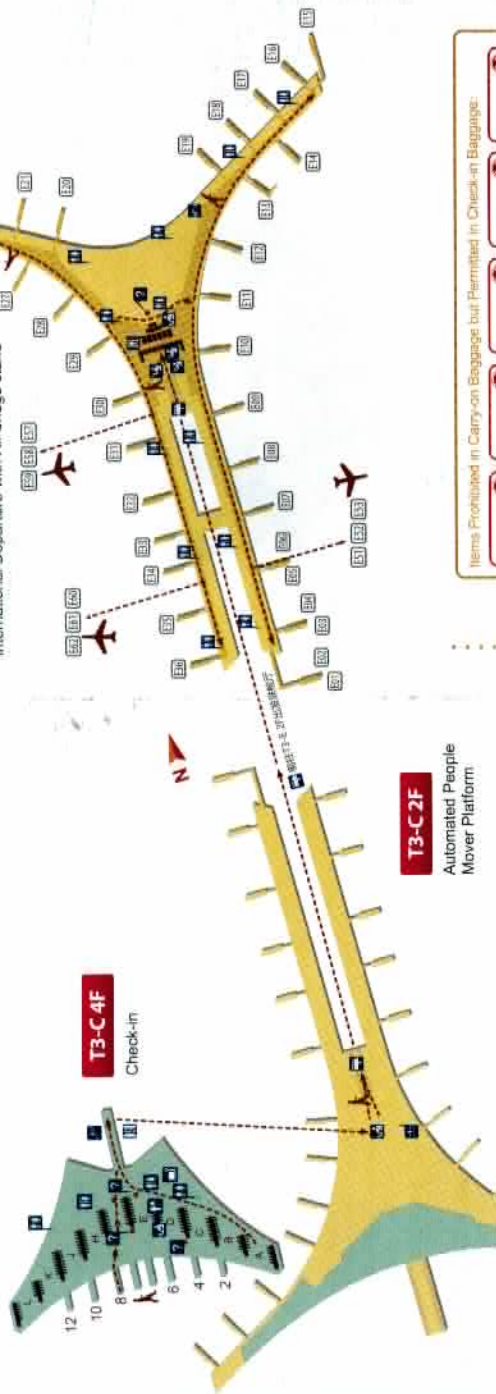


Flow of International Departure

International Departure Circuit



- 1 Check-in**
Confirmation of Terminal
Please inquire of the airline company or the airport about the terminal.
- 2 Customs Declaration**
Passengers with articles to declare must fill in China Customs Declaration Form for Exit/Entry Passengers, make a written declaration at the Declaration Counter on the fourth floor of T3-C, and choose the "Declaration Channel" for Customs clearance. Passengers with no articles to declare don't have to fill in China Customs Declaration Form for Exit/Entry Passengers, and can choose the "Non-declaration Channel" in T3E for Customs clearance.
- 3 APM Train**
Passengers can take an APM train to T3-E for international departure.
- 4 Inspection & Quarantine**
Passengers who carry the following accompanied articles should declare to the inspection and quarantine officials: biological species resources, live animals, animal products, animal carcasses or specimen, plants and plant products, propagating materials for plants, soil, microbes, human tissues, biological products, blood or blood products.
- 5 Immigration**
The 72-hour visa-free transit passengers are required to present valid international travel documents and the Foreigner Entry and Exit Registration Card for frontier inspection.
- 6 Security Check**
Please prepare your boarding pass and valid ID card in advance for check by security checkers. In order to guarantee flight safety, passengers must pass by the security check door to have your keys, cell phones, and purses checked by the X-ray machine. Thank you for your cooperation.

T3-E2F
Automated People Mover Platform,
Customs-Immigration-Quarantine for
International Departures,
International Departure Waiting Hall,
International Departure-with Air bridge stand

T3-C2F
Automated People
Mover Platform

T3-C4F
Check-in

Items Prohibited in Carry-on Baggage but Permitted in Check-in Baggage:

Tip: Articles forbidden both in cabin and in hold:
Gun, ammunition, prohibited knife, police weapon, flammable and explosive substances (e.g. matches, lighter (gas), alcohol, paint, cracker and fireworks), corrosive and poisonous substances and other dangerous goods.

Customs Inspections

If you take accompanied articles that must be declared to the customs, you should complete China Customs Declaration Form for Baggage of Incoming/Outgoing Passengers and choose "GOODS TO DECLARE" Channel (also known as Red Channel) otherwise it is unnecessary for you to complete such form, but just follow "NOTHING TO DECLARE" Channel (also known as Green Channel).

- Articles Forbidden For Exit:**
1. All kinds of weapons, imitative weapons, ammunition and explosive articles.
 2. Counterfeit currency and marketable securities.
 3. Print, film, photo, disk, tape, videotape, laser videodisc, computer storage medium and other articles, which are harmful to Chinese politics, economy, culture and morality.
 4. Various strong poisons.
 5. Opium, morphine, diamorphine, theng as well as other opiates and psychoactive drugs that can cause addiction.
 6. Articles with dangerous bacteria, peels as well as other harmful organisms, animals, plants and their products.
 7. Foodstuff, medicine or other pestiferous articles, which are from epidemic areas and harmful to the health of humans and animals.

Waiting & Boarding

Waiting Please look carefully the gate number indicated on the boarding pass. After security check, you can go to the gate indicated on the boarding pass to have a rest and wait for boarding.

Boarding Generally, boarding starts at least 30 minutes before a flight takes off. Please pay attention to broadcasting and flight information display. Passengers are required to show a boarding pass. Do not fold it.

中国·北京
72-hour
Visa-free Transit
72小时过境免签

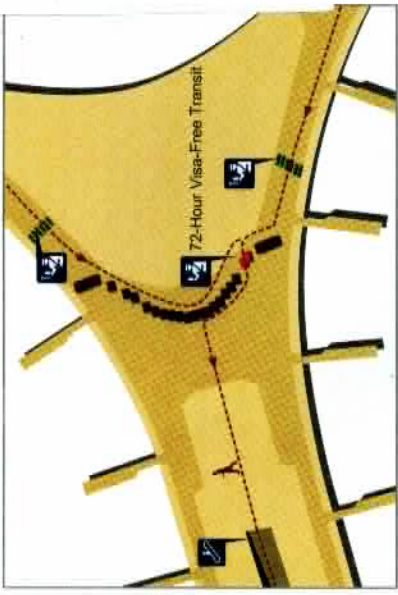
DERPART Travel Service

Königsberger Str. 29a
60487 Frankfurt am Main
Business Travel Unit
(Flug Reservierung / Visum Beratung)

Tel. 069 - 70 40 36 - 0
reservierung@derpart-frankfurt.de
www.derpart-frankfurt.de



International Arrival
leave the airport



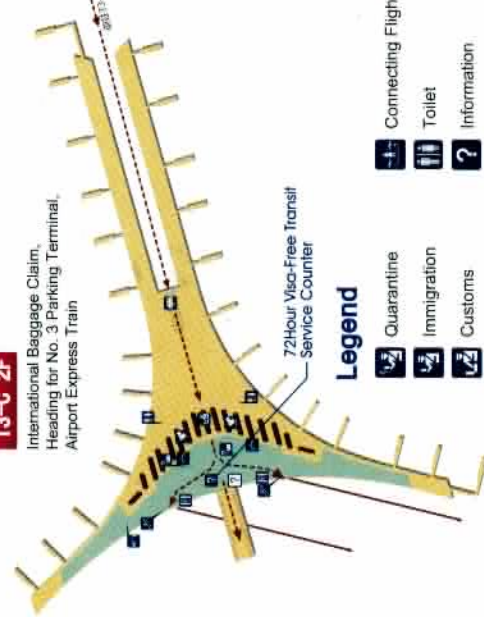
DÉRPART Travel Service

Königsberger Str. 29a
60487 Frankfurt am Main
Business Travel Unit
(Flug Reservierung / Visum Beratung)

Tel. 069 - 70 40 36 - 0
reservierung@derpart-frankfurt.de
www.derpart-frankfurt.de

T3-C 2F

International Baggage Claim,
Heading for No. 3 Parking Terminal,
Airport Express Train



Legend

- Quarantine
- Immigration
- Customs
- Security Check
- Baggage Claim
- Baggage Inquiries
- Escalator
- Automated People Mover
- Connecting Flights
- Toilet
- Information
- Locker Room
- 72Hour Visa-Free Transit Service Counter
- Controlled Area
- Public Area

Flight Arrival

After entering into the terminal, you may proceed to the Inspection & Quarantine and Immigration channels.

Inspection and Quarantine

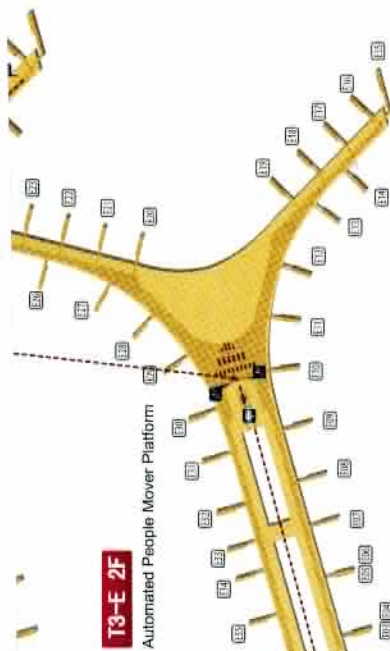
1. All passengers suffering from fever, vomit, jaundice, diarrhea, acute rash, swollen lymph gland, AIDS/HIV infection, venereal disease, psychosis or open pulmonary tuberculosis are required to declare to the inspection and quarantine officials on their own.
2. Any passenger going to a yellow fever-stricken area should submit a valid vaccination certificate to the inspection and quarantine officials.

Immigration

Transit passengers for a 72-hour visa-free stay in Beijing after entry via Beijing Capital International Airport (BCIA) are required to show the following documents for frontier inspector:
1. Valid documents for international travel
The passenger is required to hold valid documents for international travel indicating his nationality.

T3-E 2F

Automated People Mover Platform



2. Ticket for the connecting flight.
The passenger is required to show the ticket for the connecting flight from BCIA to the third country or region with the seat number specified in the flight to depart within 72 hours.
3. Foreigner Entry (Exit) Registration Card
The Foreigner Entry (Exit) Registration Card adopted by the frontier inspection authorities to register foreign passengers' basic information must be filled out faithfully. It is available in the inbound flights or on the form filling counters set up in front of the frontier inspection area.

Friendly Reminder

The 72-hour visa-free stay is confined to a stay in Beijing for a specified time and the transfer via BCIA only. Visitors are not allowed to leave Beijing for other cities during the 72-hour visa-free period or overstay 72 hours. If visitors can not depart on time or leave Beijing during the 72-hour period due to irresistible reasons, they need to apply to the Division of Entry and Exit Administration of Beijing Municipal Public Security Bureau for a visa.

APM Train

Passengers can take an APM train to T3-C for luggage claim.

Baggage Claim

Baggage Claim Hall is located at 2nd floor. At its entrance stands a baggage carousel display screen. You can check at which carousel your baggage is located according to your flight number. Issues relating to baggage, please check with your airline.

Friendly Reminder

- A locker room is available in the Baggage Claim Hall for passengers to change clothes.
- If you have several pieces of baggage, you may use a baggage cart free of charge or to apply for baggage services.
- Location of the Baggage Services: No.39 baggage carousel in International Baggage Claim Hall. RMB 10 per trolley (over-sized baggage is limited to 3 pieces) (The porter service hotline: 010-64591313)

Customs

If you take accompanied articles that must be declared to the customs, you should complete China Customs Declaration Form for Baggage of Incoming/Outgoing Passengers and choose "GOODS TO DECLARE" Channel (also known as Red Channel) otherwise it is unnecessary for you to complete such form, but just follow "NOTHING TO DECLARE" Channel (also known as Green Channel) (except those exempted from customs inspection and supervision in accordance with relevant regulations, or those passengers under the age of 16 who are traveling with adults)

Leave the Airport

After baggage claim, you will come to the Arrival Hall where you can meet your friends and relatives. Inquire about travel and hotel information at the service counter for transit passengers entitled to a 72-hour visa-free stay in Beijing, or currencies.

Friendly Reminder

- Service Counter for 72-Hour Free-Visa Transit Passengers is at the exit of the Luggage Hall.
 - Operation Time of Airport Express: T3: 06:20-22:50
- Please do not accept any services provided by people without official working badge of Beijing Capital International Airport.

Every effort has been made to include the most up-to-date and accurate information in this leaflet. As certain content may be updated and revised due to operational requirements, we apologize for any inconvenience caused by changes not shown in this leaflet at the time of distribution.

Website: www.bcia.com.cn
Beijing Capital International Airport Hotline (24 hours): +86-10-96158

Printed in June 2013